

Ysgol Gynradd Gymraeg Llwynderw



Prospectus

Ysgol Gynradd Gymraeg Llwynderw

West Cross Lane, West Cross SA3 5LS

Tel: 01792 407130

Email: 6702235_yggllwynderw@hwbcymru.net

Website: yggllwynderw.co.uk

Parents' Handbook



'Yma gyda'n gilydd yn gwneud ein gorau glas'

Head Teacher: Mrs Rachel Collins

Deputy Head Teacher: Mrs Sarah Proctor-Morgan

Chair of Governors: Mrs Ann Evans

YGG Llwynderw

Yma gyda'n gilydd yn gwneud ein gorau glas

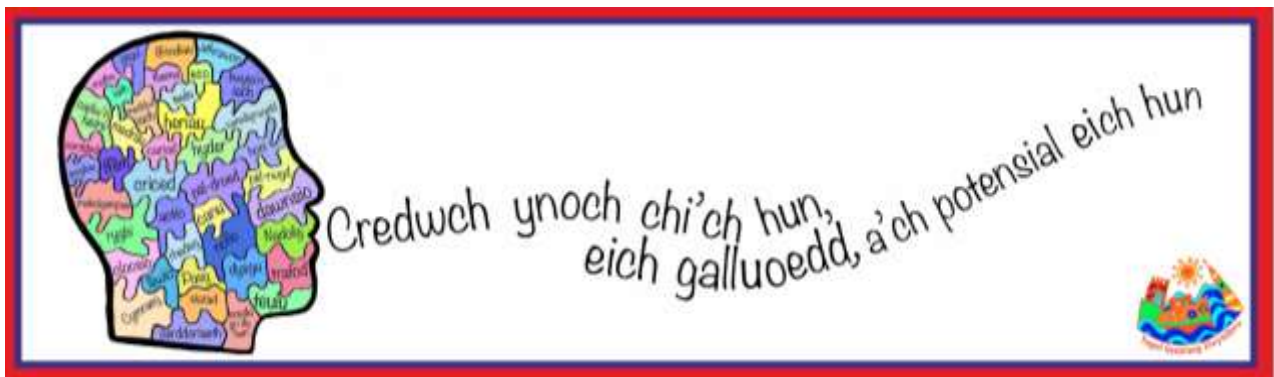
The ethos of our school will be:

- Nurturing pride in our Welsh history, tradition and language.
- Encourage friendship and kindness as a member of the community and a conscientious citizen
- Valuing effort, the desire to always do our very best.

Our aim as a school is to develop:

- Ambitious, capable learners who are ready to learn throughout their lives.
- Enterprising, creative contributors who are ready to play their full part in their life and work.
- Principled, informed citizens of Wales and the World.
- Healthy, confident individuals who are ready to live life realizing their aspirations as valuable members of society.

Our school vision ... (Believe in yourself, your abilities and your own potential.)



In order to achieve our goal and ensure that we realize our vision we must BELIEVE (CREDU)



Our curriculum: Mumbles, the Sea and More

Ysgol Gynradd Llwynderw has a thematic approach to planning the curriculum, trying to make effective use of the local area - the people and their history.

Over a period of time staff have developed and refined a whole school thematic approach as they present the curriculum.

This method is based on the philosophy that pupils should receive a broad and creative curriculum that develops skills (subject and cross-curricular), knowledge and understanding, and enthusiasm among pupils to be lifelong learners.

The Llwynderw Curriculum is rooted in our local area, our history and the people. It is structured around themes and the pupils' literacy, numeracy and digital competence skills will be developed in the context of these themes.

The strategy promotes the importance of thinking skills and developing pupils' thinking across a range of curriculum areas.

The speed of learning and the breadth of planned experiences support learners to be literate and numerate and have very good standards of digital competence, while they have an understanding of key concepts within the learning areas namely- Languages, Literacy and Communication, Expressive Arts, Health and Wellbeing, Humanities, Mathematics and Numeracy and Science and Technology.



Welcome from the Head teacher

On behalf of the school I would like to welcome you to Ysgol Gynradd Gymraeg Llwynderw. The school originally opened in 2002 in Sketty before moving to its current site in West Cross in September 2008.

Going to school for the first time is a very big step in your child's life, as well as your own. We want this transition from home to school or from school to school to be as smooth as possible. With this prospectus, the connection has begun to be made. No single prospectus can answer all your concerns, 'come to school with your child and see for yourself how happy the children are and how well they work with their teachers. Ask parents and other pupils what they think about the school. Together, happily, we can give your child the right start in his area/life at Ysgol Gymraeg Llwynderw.

The school's motto 'Yma gyda'n gilydd yn gwneud ein gorau glas' (Here together we do our very best) sums up our aim as a school clearly as it is through teamwork we will succeed and encourage each other, whether pupils or staff to give our best constantly.

Our aim as a school and community is to ensure valuable opportunities to support and motivate our children along their educational path. We ensure a caring and inclusive atmosphere that values and recognizes the efforts of each child, and puts the child's voice at the center of everything.

Collaboration and communication are key to the success of the school and I very much hope that the combination of information through the prospectus, the school website and the termly and weekly newsletters will give you a taste of school life and keep you updated on events across the school.

At Ysgol Llwynderw we have an open door policy and we feel that close collaboration between parents, carers and outside agencies is very important. We look forward to welcoming you and your child to the school. Contact the school to arrange an appointment to visit the school so that you can experience our friendly ethos and the daily hustle and bustle of learning and teaching.

Warm regards

Mrs Rachel Collins
Head teacher

Mission Statement

Ysgol Llwynderw aims to give children a complete education in a happy, stimulating and safe environment. Each child is an individual with unique needs, talents and ideas and each has a right to equal opportunities. It is therefore our responsibility to ensure that each individual is given the best possible opportunity to develop to his or her full potential, which means that the children are introduced to a great many meaningful experiences on many different levels and that they enjoy success.

Safeguarding Statement

*The Governors and staff of **Ysgol Gynradd Gymraeg Llwynderw** are fully committed to adhering to section 175 of the Education Act, 2002, which requires Local Authorities and Governing Bodies of maintained schools and institutions to have arrangements for exercising their functions with a view to safeguarding and promoting the welfare of children. The Governing Body of **Ysgol Gynradd Gymraeg Llwynderw** responds to the objective of keeping children and young people safe by: -*

- *creating and maintaining a safe learning environment for children and young people;*
- *identifying where there are child wellbeing concerns and taking action to address them, where appropriate, in partnership with other agencies;*
- *ensuring that children are listened to if they are expressing concerns; and*
- *the development of children's understanding, awareness and resilience through the curriculum.*



Introduction

Welcome to Ysgol Gymraeg Llwynderw. This prospectus includes information that you will need when your child starts school.

Our aim is to help each child develop to his/her full potential by providing a full education in a happy, stimulating and safe atmosphere. Each child is an individual who has his/her own needs, talents and ideas. We believe that parents, the school and the community should work together in the interests of the children. This means that the children will be introduced to a large number of meaningful experiences on many different levels – morally, educationally, physically, culturally and spiritually.

We hope that you and your child will be very happy as part of our school. You are welcome to visit us with your child if you have not yet done so. We will be pleased to answer any questions you may have and look forward to meeting you.

This prospectus is intended to give information to parents about our school according to the requirements of the Education Act 1986. The information was correct at the time of printing, although changes can occur before or during the school year or during following years.

Llwynderw is a Welsh, County, Mixed, Daily, primary school. Welsh is the daily language of communication used in the school.

Parents who are considering sending their child to the school should arrange to view the school by contacting the head teacher in the first instance. Your child's name can then be registered in the school office if you so wish. The school's catchment area extends from Derwen Fawr to Rhossili.

Starting school is a big step in the life of a small child and we hope to ensure that the experience is a happy one for everyone involved. An open afternoon is arranged for Nursery children and parents to welcome them to the school.



The School's Objectives are: -

To offer a happy and homely atmosphere which is an extension of the home in order to ensure each child's mental, emotional, spiritual and social development.

To expect the children to do their best at all times. Effort is rewarded as well as success.

To encourage the children to think for themselves and to take more responsibility for their own education and to become independent.

That each child will be completely bilingual by the time they leave the school.

To nurture an awareness of Welshness and love for our country and its art.

To encourage the children to respect the local environment, emphasising each individual's role in our society.

To encourage self-confidence, self-respect and respect for others, whether they are peers, teachers or other adults, within and outside the school.

To offer a wide range of experiences, so that the the children will acquire the life skills necessary to become fully rounded citizens.

That the children should learn how to collaborate and help each other.

To encourage the children to tolerate and respect other ideas and beliefs.

To offer equal opportunities to each individual, whatever the circumstances, to participate in every activity.

To develop the children's respect towards religious and moral values, and to show sympathy towards the world's races and religions.

It is important that we recognise the fact that children are individual and unique beings, and as a result we must respect their beliefs and consider their views and feelings.

School Session Times

The school is open between the following hours:

*Morning session: 8.30 a.m. – 11.00 a.m. (Morning nursery)
8.30 a.m. – 11.30 a.m. (Reception class- Year 6)*

The bell is rung at 8.25 a.m.

*Afternoon session: 12.30 pm – 3.00 p.m. (Afternoon Nursery)
12.30 p.m. - 3.00 p.m. (Reception class- Year 6)*

Parents are asked to ensure that their children arrive at school punctually by 8.25 a.m., but not before 8.20 a.m. as this is when the staff are on duty (unless their child is going to the breakfast club). Parents are reminded of their responsibility to collect their children punctually at 3.00 p.m or make other suitable arrangements. We ask parents to park in a sensible place when taking their children to school while considering the health and safety of the school children, that of the children from neighbouring schools as well as the safety of the the community. The school has a special lane on site which allows parents to drop off the children in the morning when not being used by the buses. We ask for parents' co-operation in not staying too long in the lane. We ask for parents not to use this lane at all at 3.00 p.m. but parents collecting from the after-school club are welcome to use it. If your child is attending a club after school hours, e.g. Sports, French, Choir etc., we would appreciate it if you could park in the same way as parents do at the end of the day, for the sake of the health and safety of the children

Free transport is available to children who live within the catchment area but who travel over two miles to school.

Both a breakfast club and after school club are run at the school. Breakfast club starts at 7:45 a.m. After school club runs from 3:00 p.m. – 5.00 p.m (Monday – Thursday) After school club cost £10 per child per session (£7.50 for siblings). After school club needs to be booked in advance to ensure that there are places available.

Breakfast club is free and is available to any child who wants to use it. Please note that the latest time the children can be served breakfast is 8:05 a.m.



School Meals and Morning Snacks

Ysgol Llwynderw is a healthy eating school. We have received 5 'Healthy Schools' awards.

Lunchtime food is prepared from fresh in the school kitchen by Miss Anna Watson, our cook. Meals are provided according to the dietary policy produced by the City and County of Swansea's Catering Service.

All year groups receive free school lunches. There is a daily choice of warm meals and vegetarian food. Of course, the children can bring their own sandwiches to school; you do not have to have school dinners.

Breakfast club is free and is available to all children in the school every weekday. Last entry to breakfast club is 8.05am for breakfast.

Fruit is also provided daily in the school shop. The cost of fruit is £12.00 per half term (payable via iPay.)

Drinking water is available to all the children.

*We kindly ask parents who send lunches from home (in a lunch box) to follow the school's policy and ensure that the food provided in the boxes are healthy and are part of the child's balanced diet. **We are a nut free school.***

Curriculum Information

The world is changing. There are many new challenges that will require new technology and new ideas. Your child needs the knowledge, skills and experiences to succeed. Your child's school curriculum will help with that. The curriculum is not just about what they learn, it is also about how they learn and the reasons why they learn. Your child's new curriculum will be designed by them and their teachers.

They will:

- take part in creative lessons that have real life meaning;*
- reflect and think about what they have learned and move on;*
- learn subjects that connect them with the rest of the world.*

Knowledge is still very important, so the new curriculum will give them skills and opportunities to grow.

Further information about our curriculum can be found n the link below:

<https://www.ygglwynderw.co.uk/cwricwlwm-i-gymru-curriculum-for-wales/>

The Four Purposes

The four purposes form the basis of the curriculum and will be the foundation of everything they learn. All children and young people will be supported to be:

- 1. ambitious, capable learners who are ready to learn throughout their lives*
- 2. enterprising, creative contributors who are ready to play a full part in life and work*
- 3. principled, informed citizens ready to participate in Wales and the world*
- 4. healthy, confident individuals who are ready to live a full life as valued members of society.*



The new curriculum is a journey - building knowledge, skills and experiences.

There will be times when they:

- move forward quickly;*
- slow down to ensure they understand the subject;*
- divert because they discover something that interests them.*

Progress is not always related to their age. It will not happen the same at the same time for everyone.

They will progress as:

- their knowledge increases;*
- their understanding of things deepens;*
- their communication skills grow;*
- their skills improve.*

The new curriculum is about connecting learning. In addition to learning literacy, numeracy and digital skills, there will be six Areas of Learning and experience.

Your children may not have lessons under these names, but everything they learn links to these areas:

- Expressive arts*
- Mathematics and Numeracy*
- Health and well-being*
- Humanities*
- Languages, Literacy and Communication*
- Science and Technology*

Parents are welcome to come and discuss their child's development at any time, after arranging in advance. An information evening is held at the start of the new school year and then there are parent/carer meetings twice a year during the Autumn and Spring term.

A written report is given to parents at the end of the school year.



Homework

Homework is set to support class work. It is set as follows:

<i>Nursery and Reception</i>	<i>There are useful links to support your child on the school website.</i>
<i>Years 1 -6</i>	<i>A homework menu is prepared based on the 6 Areas of Learning and is presented in formats suitable for the childrens age groups.</i>

Each child is expected either to read a book/part of a book before bed or have someone read to him/her or to have someone listen to him/her reading from a book.

Spelling / high frequency words are available on the school website.

Learning to play musical instruments is offered in year 3 (violin, harp, brass, cello and drums). It is also necessary for the children to practice playing their instrument. If they need to practice the harp, they are welcome to follow the practice timetable during playtime.

We do not provide children with reading books during the holidays. They are expected to read books of their own choice during these times. It would be a good idea to visit the local library.





Arrangements for the general care of the children.

Each child has a class teacher who is responsible (in the first instance) for those pupils. The class teachers look after the children’s development and welfare. If any problems occur which require obvious changes, they are reported to the Head Teacher or Deputy Head Teacher, who will take responsibility. The main responsibility lies with the Head Teacher. If a parent is concerned about any aspect of the welfare of his/her child, an appointment will be arranged for him / her to discuss this with the class teacher. It would be helpful if parents could make an appointment to see the Head Teacher in advance.

The school staff have attended a first aid course. This is renewed every three years. In addition to this, some of the staff have attended further training, for the health and safety of the children.

Safeguarding and Child Protection

Ysgol Llwynderw is committed to Safeguarding and promoting the welfare of children by following the county’s policy. We will endeavour to provide a safe and welcoming environment where children are respected and valued.

We will be alert to the signs of abuse and maltreatment and will follow our procedures to ensure that children receive effective support, protection and justice.

Ysgol Llwynderw has a duty to make a direct referral if felt needed.

Mrs Rachel Collins (Head Teacher) and Sarah Proctor-Morgan (Deputy head teacher) are our school Child Protection Officers.

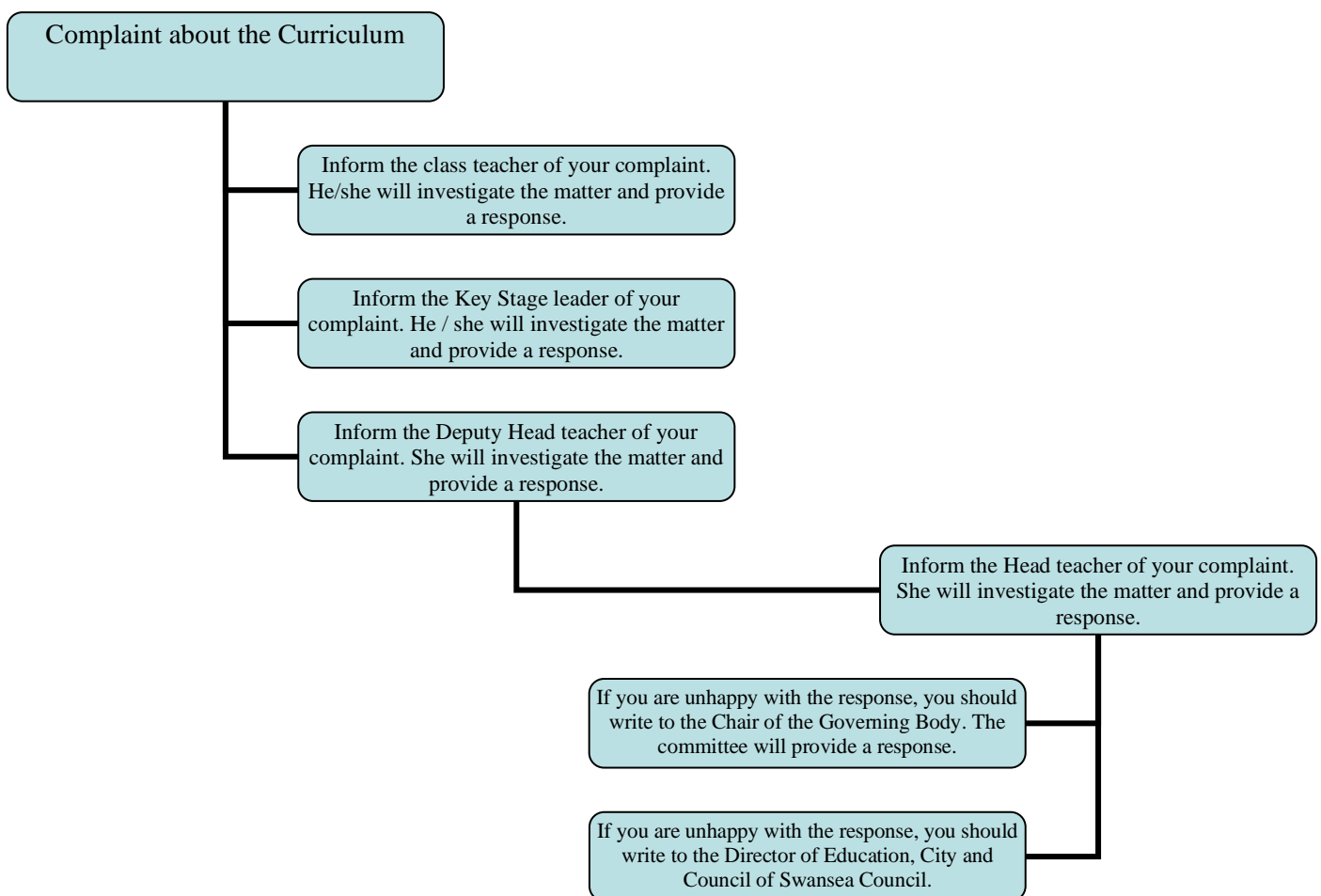
Mrs Ann Evans Child Protection Officer Governing body

Lisa Collins Local Authority Child Protection Officer

Complaints procedure regarding the curriculum

If any parent has a complaint about the organisation and/or content of the curriculum (under Section 23 of the Education Act 1988) he/she is asked to follow the following steps:

a. Inform the Head Teacher of your complaint. He will investigate the matter and



If you have any major concerns, we would ask you not to discuss them in full in the parent's evening, but to ask for an additional meeting.

The Head and Deputy Head Teacher will possibly be present in this meeting.

School Rules

We have based our rules on three words that the pupils discussed in each class.

These words are constantly reinforced.

Parch -Respect

Gwneud ein gorau glas – Doing our very best

Caredigrwydd – Kindness

After School Clubs

- *After School Club (childcare) – Runs from 3:00 pm – 5.00 pm Monday-Thursday*
- *Sports clubs – Netball, rugby, Choir and dance etc*
- *French/ Spanish club*

Sports

The school competes in many different sporting activities throughout the year, e.g. hockey, swimming, netball, rugby, cricket, athletics. As well as this, years 3-6 have swimming lessons at Penlan swimming pool.

Sports and Physical Education Clothes

The children are encouraged to wear a plain white 'T' shirt and blue shorts for PE sessions.

Sports lessons

There will be two lessons a week. The children will be trained in several aspects of physical education as well as the importance of keeping the body fit and healthy. A variety of skills will be taught i.e. games skills, gymnastics, athletics, dance and movement and swimming.

The children will travel in a bus with safety belts to swimming and events off school premises. Insurance will be arranged.

Educational Visits

Educational visits are a necessary and enjoyable part of school life. They will take place throughout the year in relation to the Curriculum for Wales. They bring education to life for the children.

Parents are asked to make a voluntary financial contribution in order for their child to take part in these activities. The school will fund some of the visits from the school fund. It is our policy to help parents if they have difficulty paying. The Head Teacher will consider each claim individually and in confidence. Full details

will be sent before each visit and the parent or guardian will need to sign the consent form, as well as providing information about the child's health. Children in Years 4, 5 & 6 will have the opportunity to go on local residential courses, Year 4 to Cardiff Bay, Year 5 to Llanion, Year 6 to Llangrannog.

Occasionally it is necessary to ask for parents' support in looking after the children while on a day trip. If you could assist in this area would be so kind as to let the secretary know and your name can be added to the list. For nursery children, it is necessary to have one adult per child.

If you are in receipt of Universal Credit then you are also entitled to money off school trips

Additional Learning Needs (ALN) Arrangements

Children and young people with ALN need additional support to learn. This would be due to the following reasons:

- they find it more difficult to learn than other children of the same age*
- they have a disability which means they cannot use, or find it difficult to use, facilities for learning at the local nursery, school or college*

The additional support given to children with ALN to help them learn is called additional learning provision. This provision must be included in a support plan called an individual development plan (IDP).

Additional learning provision for a person aged 3 or older is education within the school which is additional to, or different from, what is available to most children of the same age.

Additional learning provision can be provided by teachers, teaching assistants or tutors. It can also be provided by specialist services such as a speech and language therapist or teachers of the deaf.

Religion, Values and Ethics (RVE)

Religion, Values and Ethics (RVE) is a statutory requirement of the Curriculum for Wales and is mandatory for all learners from ages 3 to 16. RVE forms part of the Humanities Area. The Area encompasses Business Studies, Geography, History, Religion, Values and Ethics and Social Studies. These disciplines share many common themes, concepts and transferable skills whilst having their own discrete body of knowledge and skills.

RVE at Y G G Llwynderw is delivered in accordance with the Swansea locally agreed syllabus for RVE (2022). Our curriculum is planned to ensure that all pupils receive objective, critical and pluralistic RVE and are given opportunities to develop their religious literacy throughout their time in Y G G Llwynderw school.

In accordance with Welsh Government legislation, there is no right to withdraw from RVE.

Relationships and Sexuality Education (RSE)

Our school curriculum embraces the RSE Code. Our RSE provision will have a positive and empowering role in our learners' education and will play a vital role in supporting them to realise the four purposes as part of a whole-school approach. Helping learners to form and maintain a range of relationships, all based on mutual trust and respect, is the foundation of RSE. These relationships are critical to the development of emotional well-being, resilience and empathy.

In accordance with Welsh Government legislation, there is no right to withdraw from RSE.

School Nurse

The School Health Nurse Service provides education, support, advice and assistance in all issues related to health and public health for school aged children and the wider school community. They will work closely with school to provide evidence based sessions in the classroom in line with the RSE curriculum. School Nurses are also available to discuss and advise on a 1:1 basis if appropriate. If you wish to contact the School Nurse, speak to the school office

Attendance / Illness

Every school must record and publish unauthorised absence numbers. Regular and punctual attendance is very important. Would you please be so kind as to inform us if your child is ill and cannot come to school by ringing the school or sending a note when he/she returns to school. Without giving us a reason, your child will be absent without permission.

Authorised absences include illness, special circumstances, dental and medical appointments and so on.

Unauthorised absences include holiday absences over 10 days and late arrival at sessions without reason. The official time for closing the register is 8.45 a.m and 12.45pm.

If your child is ill or is receiving treatment from a doctor it would be wise to keep him/her at home until the treatment is over. If your child happens to feel ill during the school day you will be asked to collect him/her. Please remember to inform us if your phone number changes.

Every visitor must be recorded in and out during the day. A visitor's book is kept outside the school office.

If your child requires medication in school, please contact the Headteacher. Asthma inhalers / EpiPens are always kept in an easily accessible location.

Safety arrangements

We follow the County's Health and Safety policy guidelines. We have a busy and very effective health and safety committee. Mrs Ann Evans is the link governor for this. They meet termly and inspect the school to ensure that there are no problems. They prepare a report which will include a list of recommendations if anything needs to be done.

Transitioning to comprehensive school

During Year 6, there will be close connections between the school and Ysgol Gyfun Gwyr. There will be an open evening in Ysgol Gyfun Gwyr in the first term as well as being an opportunity for pupils to visit the school for lessons. There will be a bridging residential week in Llangrannog during the summer term. The children will also receive French lessons from a teacher from Gwyr in addition to occasional skills lessons.

School Uniform

We encourage the children to wear the school's official uniform. This is the first impression of visitors to Ysgol Llwynderw. The uniform is available to buy in: J&S Sports, 74 Tycoch Road, Tycoch.

Or online: <http://www.clothing-suppliers.co.uk/Stores/Your-School/LLwynderw.aspx>

Girl's uniform

- Blue School jumper
- Red polo shirt
- Blue skirt/ trousers/ red pinafore dress
- Black shoes
- Red summer dress
- Blue shorts

Boy's uniform

- Blue school jumper
- Red polo shirt
- Blue trousers/ shorts
- Black shoes

PLEASE NOTE THAT JEANS ARE NOT PART OF THE SCHOOL UNIFORM

If you are in receipt of Universal Credit then you are also entitled to a School Uniform Grant.

PE clothes should be carried in a bag. The children are welcome to keep these in school until the holidays. We ask that you clearly label all of your child's equipment with his/her name.

Ysgol Llwynderw Parent, Teacher Association (PTA)

The school has a very active and supportive parent and teacher association which organises a number of social and fund-raising activities during the year. It is important that parents take an active role in school life.

The Governing Body

The Education Act (Number 2 1986) and the Education Act 1988 gave new responsibilities regarding the curriculum, sex education, finance, appointing staff, discipline and exclusions, publishing the governors' Annual Report and holding the Parents' Annual Meeting with the Governing Body.

The governors serve for four years. Parent-governors and teacher-governors are elected by means of a secret ballot. Parent-governors have the right to complete their four years after their child has left. A teacher-governor does not have the right to serve after he/she has finished teaching in the school.

Parent Governors

Mrs Nerys James
Mrs Laura Poiner
Mrs Anwen Jones
Mr Chris Prosser

Teacher - Governors

Mrs Rachel Collins (Pennaeth)
Mrs Rebecca Routledge

Staff - Governor

Mrs Carly Chinhengo

Clerk to Governors

Mrs Lowri Phillips

Community Advisor

Mrs Ann Evans (Chair)
Mr Martyn Jones
Mrs Lowri Davies

Local Authority

Mrs Emma Beynon

Members of Staff

A good school depends on all school staff working together as a team. Our aim is to have staff that is committed to ensuring that each child attains his/her full potential.

Teachers

<i>Head teacher</i>	<i>Mrs Rachel Collins</i>
<i>Deputy Head teacher</i>	<i>Mrs Sarah Proctor-Morgan</i>
<i>Nursery</i>	<i>Mrs Ceri Parker</i>
<i>Reception</i>	<i>Mrs Emily Turner</i>
<i>Year 1 and 2</i>	<i>Mrs Mererid Govier & Miss Carys Curtis Miss Elise Jones Mrs Sarah Proctor-Morgan & Mrs Sian Thomas</i>
<i>Year 3 and 4</i>	<i>Yr 3 – Mrs Lucy Diamond & Mrs Jessica Peel Yr3 – Mr Matthew Hughes Yr4 – Mrs Ffion Morgan & Mrs Jodie James-Perkins</i>
<i>Year 5 and 6</i>	<i>Mrs Angharad Bean Mrs Rebecca Routledge Mrs Rachel Lewis & Ms Lowri Harry</i>
<i>PPA Staff</i>	<i>Ms Lowri Harry Mrs Dona Viney Mrs Sioned Trick</i>
<i>ALN</i>	<i>Mrs Jodie James-Perkins</i>

Learning Support Assistants –Miss Poppy John, Miss Naomi Hole, Miss Lydia Ciccolella, Mrs Teleri Davies, Mrs Rhiannon Williams, Mrs Ceindeg Spiller, Mrs Sioned Trick, Mrs Claire Jones, Mrs Sian Jones, Mrs Carly Chinhengo

Office – Mrs Teleri Davies & Mrs Lowri Phillips

Kitchen Staff - Miss Anna Watson, Miss Jen Croucher, Ms Alison Casey, Ms Sudeshna Rakshit

Supervisors –Ms Stefanie Rainey

Caretaker - Mr Phil Renowden

After school club staff: Ms Stef Rainey, Miss Naomi Hole, Miss Poppy Johns, Mrs Bridget Thomas, Miss Lydia Ciccollela

Thank you for taking the time to read this Prospectus. If you have any other questions, please do not hesitate to ring or come and see us in the school. You will always be welcome in Llwynderw.

School Terms 2025 - 2026

Autumn Term 01/09/2025 - 19/12/2025

Spring Term 05/01/2026 - 27/03/2026

Summer Term 13/04/2026 - 20/07/2026

Half Term

Autumn 27/10/2025 - 31/10/2025

Spring 16/02/2026 - 20/02/2026

Summer 25/05/2026 - 29/05/2026

Bank Holiday - 04/05/2026

***Inset days- 01/09/25, 02/09/25, 05/01/26, 13/02/26,
13/04/26, 20/07/26***

The School

